
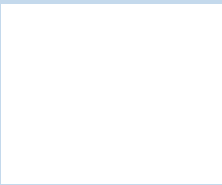
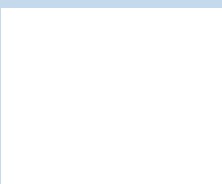


SHERWRITE

Dry Erase Wallcoverings

	<p>MAGNETIC RECEPTIVE</p> <p>SWMG-WO White (Writing Only, 48" wide)</p> <p>SWMG-PC White (Projection Capable, 48" wide)</p> <p>SW60-PCMG (Projection Capable, 60" wide)</p> <p>SW60-MGWO (Writing Only, 60" wide)</p>
	<p>PROJECTION CAPABLE</p> <p>SW-PC White (Non-magnetic, 60" wide)</p>
	<p>WRITING ONLY</p> <p>SW-WO White (Non-magnetic, 60" wide)</p>

FEATURES

- Class A product that installs just like a Type II vinyl wallcovering.
- Easily maintained writing surface, tested to stand up to harsh cleaning chemicals.
- Ten-year limited warranty.
- Accessory package includes Perimeter Trim, Marker Tray and Tac Strip.
- Available in Magnetic, Projection, and Writing Only.



EASE OF INSTALLATION

Installs just like a Type II commercial wall covering. Normally railroaded to avoid vertical seams on the writing surface.

EASY TO MAINTAIN

Dry erase markings are removed with a soft cloth or eraser. Expo cleaner can be used for any resistant markings. Surface should be thoroughly cleaned periodically for best performance and appearance. DO NOT USE any abrasive cleaning tools or harsh solvents. Writing surface could be permanently damaged if instructions are not followed.

TEN YEAR WARRANTY

Sherwrite Dry Erase Wall Covering is guaranteed for 10 years from installation date. With proper use and maintenance, our product will perform for a minimum of 10 years. See detailed cleaning and maintenance instructions for proper care.

SHERWRITE

Dry Erase Wallcoverings



SPECIFICATIONS

Total Weight	Minimum Type II
Width	Projection 60" Writing Only 60" Magnetic 48" Magnetic 60"
Flame Resistance	Class A/I
Tensile and Tear	Meets all Type II standards
Solvent Resistance	Class 5 (ASTM D4752 using Expo Blue Cleaner)

FEATURES

- Dry erase marks clean easily
- Large writing area
- Simple installation like standard commercial wallcovering
- Class A fire rated
- Resistant to common cleaners
- 10-year limited warranty
- Cost effective
- Practical alternative to whiteboards
- Ideal for converting existing chalkboards
- Available in Magnetic, Projection and Writing Only

CARE & MAINTENANCE

Prior to initial use, clean dry erase surface thoroughly with Expo cleaner. Follow with clean, warm water applied with a soft towel. Periodically clean the entire writing surface to extend the life and look of this product. Expo Bold Color/Original Ink markers work best on Sherwrite Dry Erase Walls.

WARNING: Do not use any type of abrasive cleaners or sharp-edged tools on the dry erase surface.

INSTALLATION

Installs like a standard Type II commercial wallcovering. Smoothing tools must be wrapped in a soft cloth or towel to avoid damage to the dry erase surface. Request detailed installation instructions.

Visit www.Sherwrite.com for Specifications, Installation Instructions and more.

SHERWRITE

Dry Erase Wallcoverings

ACCESSORIES

SW - Snap Trim



SW - Marker Tray



SW - Cork Trim



Micro-Fiber Erasers



J-Cap Trim



Expo Markers & Spray Cleaner



EASE OF INSTALLATION

Sherwrite Wallcovering installs just like a Type II commercial wallcovering. Normally railroaded to avoid vertical seams in the writing surface.

EASY TO MAINTAIN

Dry erase markings are removed with a soft cloth or eraser. Expo cleaner can be used for any resistant markings. Surface should be thoroughly cleaned periodically for best performance and appearance. **DO NOT USE** any abrasive cleaning tools or harsh solvents. Writing surface could be permanently damaged if instructions are not followed.

TEN YEAR WARRANTY

Our Dry Erase products are guaranteed for 10 years from installation date. With proper use and maintenance our product will perform for a minimum of ten years. See detailed cleaning and maintenance instructions for proper care.



CARE AND MAINTENANCE

BEFORE WRITING ON DRY ERASE SURFACE

Before initial use of the writing surface the material must be cleaned with Expo Cleaner and a soft cloth, and then towell dried. Follow with clean water and a soft cloth. Use another clean towell to dry.

MARKERS

We recommend the use of Expo Bold Color/Original Ink markers.

DAILY CLEANING

Micro-fiber erasers or cloths are recommended to remove dry erase markings. Change or clean the eraser/cloth often to avoid leaving excessive marker residue on the surface. For cleaning marker residue build up, use Expo brand Whiteboard Cleaner and a soft cloth. Projection Capable items have a matte/low-glare dry erase surface that requires more frequent cleaning than Writing Only/Gloss Material. No markings will be permanent, but it may be necessary to use Expo Cleaner to bring these Projection Capable products back to "like new" condition.

Do not use soapy water to clean the surface, as it will leave behind a film that severely interferes with erasing. This is true of any other cleaning agent that leaves a filmy residue behind.

LONG TERM CARE

Clean the entire surface on a regular basis to ensure the ultimate performance and appearance of the product over the long term.

Do not use any abrasive cleaners/cleaning tools, erasers with hard plastic edges/housing or pointed writing instruments on the dry erase surface.

Visit www.Sherwrite.com for Specifications, Installation Instructions and more.

Sherwrite Dry Erase Wallcovering

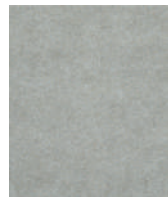
Description	Usage	Color	Gloss Level	Width/Roll Size	Warranty
Dry Erase Wall Covering 60" Wide #SW60-PCMG	Magnetic and Projection Capability Dry Erase Writing	White	Low Gloss (Projection)	60-inches Wide Maximum Roll Length 50-feet	10 years
Dry Erase Wall Covering 60" Wide #SW60-MGWO	Magnetic Capability Dry Erase Writing	White	High Gloss	60-inches wide Maximum Roll Length 50-feet	10 years
Dry Erase Wall Covering 48" Wide #SWMG-PC	Magnetic and Projection Capability Dry Erase Writing	White	Low Gloss (Projection)	48-inches wide Maximum Roll Length 50-feet	10 years
Dry Erase Wall Covering 48" Wide #SWMG-WO	Magnetic Capability Dry Erase Writing	White	High Gloss	48-inches wide Maximum Roll Length 50-feet	10 years
Dry Erase Wall Covering 60" Wide #SWPC-White	Projection Capability Dry Erase Writing	White	Low Gloss (Projection)	60-inches wide Maximum Roll Length 100-feet	10 years
Dry Erase Wall Covering 60" Wide #SWWO-White	Dry Erase Writing	White	High Gloss	60-inches wide Maximum Roll Length 100-feet	10 years

TACKABLE WALLCOVERING

Class A • ECO FRIENDLY • LIGHT WEIGHT & FLEXIBLE

FEATURES & BENEFITS

- 100% Polyester
- 60% Post Consumer Content
- Solid Color Through & Through
- Formaldehyde-Free
- Non-Toxic
- Non-Allergenic
- Installs with LOCTITE® Express Power Grab Adhesive
- No Linoleum Content
- High Impact Resistance
- Odor and Dust Free
- Seams Excellently
- Cuts Cleanly
- No Build Up of Static Electricity
- 10 Year Limited Warranty
- Perfect Solution for Healthcare, Education, Hospitality and Corporate Installations



SW2402



SW4402



SW6402



SW8402



SW0502



SW2502



SW0602



SW4502



SW6502



SW8502

TACKABLE WALLCOVERING

SPECIFICATIONS

EASY TO INSTALL

Easily installs using LOCTITE® Express Power Grab Adhesive. It is light weight and ultra-durable, making it easier to handle than the standard linoleum tack surfaces. As always, inspect material carefully BEFORE CUTTING to confirm that the correct color and quantity have been supplied. For detailed installation instructions go to www.exh-1.com

WARRANTY

Covered by our industry leading 10-year warranty. This warrants material will be free from any defects in material or workmanship and will meet the design criteria noted in our specifications when properly applied per our recommended installation instructions.

ACCESSORIES

Available with an aluminum perimeter trim to protect all exposed edges, providing a clean and aesthetically pleasing appearance.

PHYSICAL PROPERTIES

COMPOSITION

100% Polyester
60% Post Consumer Content
Solid Color Through & Through

FIRE RATING

Class A
ASTM-E-84

WEIGHT

4.90 oz / Sq Ft.

THICKNESS

.350"
(9 mm)

SHEET SIZE

48" x 96"
(1220 mm x 2440 mm)

COLORS

10



Sherwrite
Dry Erase Wallcovering